

## MetroLinq™ 2.5G 60 Beamforming sector

Cloud-managed Multi-Gigabit Outdoor Base Station 60GHz PTP + 5GHz

The MetroLinq™ 2.5G 60 Beamforming Sector is a powerful 60 GHz MultiPoint base-station packed with the latest technologies from IgniteNet. This new radio can achieve 2.5 Gbps capacity allowing the construction of multi-gigabit, future-proof hybrid fiber wireless networks quickly and cost-effectively. Using the latest phased array beamforming antenna design allows 120° area coverage with an improved performance when focusing the signal to a specific client when data is transmitted and received. The MetroLinq™ 2.5G 60 base-station also includes a second 5GHz radio which acts as a backup on a client by client basis to provide integrated redundancy without any additional hardware or complexity! It also has multiple client device options to choose from depending on distance, performance, and other application specific requirements.

### Inteference-Free & Unlicensed Band

The IgniteNet™ MetroLinq™ Base Station offers unprecedented performance - combining both the benefits of unlicensed band operation with no interference!

### Dual Band 60GHz + 5GHz Operation

The MetroLinq™ Base Station includes a second 5GHz radio which can be configured as a backup to the 60GHz

### Ultra high capacity and beamforming

2.5 Gbps capacity and 120° beamforming sector antenna allow simple and secure extension of existing fiber networks at unmatched speed and cost.

### Powerful, Flexible Configuration

The MetroLinq™ Base Station can operate either as a stand-alone device or as a coordinated, cloud-managed device, easily meeting the requirements of any installation.

### Robust Weather-Resistant Design

The MetroLinq™ Base Station features a hybrid metal/plastic design built to withstand the harshest environments including precipitation, hot/cold weather and high/low humidities.

## Client Options (Sold Separately)



MetroLinq 2.5G 60 - 35  
60GHz + 5GHz



MetroLinq 2.5G 60 - 19  
60GHz + 5GHz



MetroLinq LW  
60GHz + 5GHz + 2.4 GHz  
(coming soon)

## Features

### HARDWARE FEATURES

- › 1x 2.5 Gigabit Ethernet Port (PoE IN 24-48v)
- › 1x SFP Port
- › 1x Screw Terminal Block (DC Power IN 24-48v)
- › 1x USB 3.0 Port
- › Dual flash image support

### LEDs

- › Power, Ethernet, Wireless, Health/Status

### DIMENSIONS (L x W x H )

- › 190 x 190 x 60 mm/ 7.48 x 7.48 x 2.36 inch

### WEIGHT

- › 2 kg/ 4.41 lb with mount

### POWER

- › 24-48V/1A passive Gigabit PoE or DC

### OPERATING ENVIRONMENT

- › Operating Temperature: -30 to 55C (-22 to 131 F)
- › Store Temperature: -30 to 55C (-22 to 131 F)
- › Operating Humidity: 10 to 90% non-condensing (RH)

### REGULATORY / STANDARDS COMPLIANCE

- › FCC/IC
- › CE

### RANGE

- › Up to 150m (0.09 mi) (BF to LW, location dependent)
- › Up to 400m (0.25 mi) (BF to 19cm, location dependent)
- › Up to 700m (0.43 mi) (BF to 35cm, location dependent)

### RF PERFORMANCE (TX)

- › 60GHz: 14dBm @ 4.62 Gbps
- › 5GHz: 27dBm @ 6Mbps, 23dBm @ 866Mbps

### RF PERFORMANCE (RX)

- › 60GHz: -74dBm @MCS1; -60dBm @ MCS9
- › 5GHz: -94dBm @MCS0; -72dBm @ MCS15

### ANTENNA

- › 60GHz: 18dBi, 120 degrees
- › 5GHz: 15dBi, 120 degrees

### KEY FEATURES

- › 2.5+ Gbps Aggregate throughput; dynamically allocated (60GHz)
- › Advanced 60GHz beam forming for easy alignment
- › 600Mbps Aggregate throughput; dynamically allocated (5GHz)
- › Management VLAN support and VLAN pass-through
- › Supports Service Provider and Enterprise type networks
- › Stand-alone or Cloud-controlled operating modes
- › Base Station mode and up to 32 endpoints (8 endpoints at launch)
- › Link failover/backup (60GHz + 5GHz)
- › 128bit AES Encryption (standard; 5GHz and 60GHz)
- › SNMP Monitoring with Private MIB

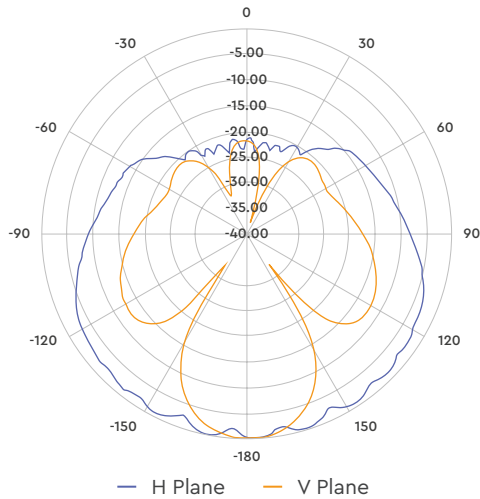
### APPLICATIONS

- › Fixed Wireless Access (broadband)
- › 3G/4G Backhaul
- › Metro WiFi
- › Campus Interconnection
- › Hybrid Fiber/Wireless Networks

## Ordering Information

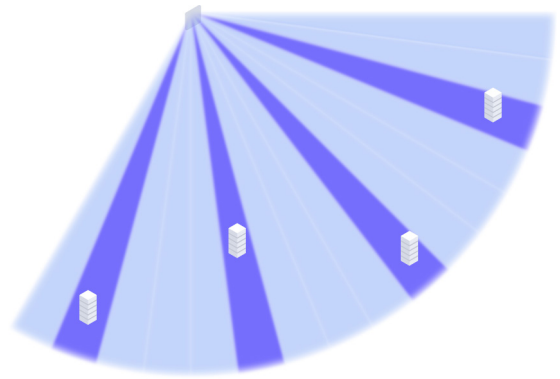
Part Number	Description
ML2.5-60-BF-18-XX	2.5Gbps Outdoor Base Station 60GHz (18dBi) + 5GHz (15dBi) 120° coverage

\*\*XX is used to denote localization (US, EU, AU, CN)



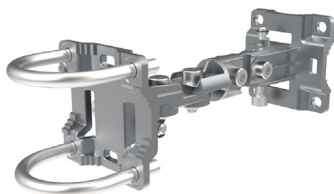
**Antenna radiation pattern**

120 degrees on horizontal plane and 32 degrees on vertical plane

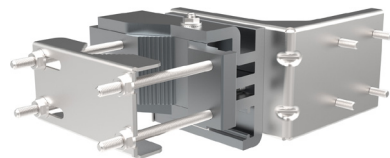


16 beam steps with 10 degree horizontal angle and 32 degree vertical angle improves noise immunity and assures security of your links.

**Mounting options**



Standard mounting bracket is good for locations requiring more tilting allowing to +/- 80 degrees adjustment. It fits a pole of 25 - 80 mm (0.98 - 3.15 inch) and can be mounted on a wall too. Withstanding 120 km/h winds.



High precision LR bracket is made for longer distance links. It fits a pole of 45 - 100 mm (1.77 - 3.94 inch) and can be tilted +/- 12 degrees vertically and +/- 15 degrees horizontally. Withstanding 200 km/h winds.

**Alignment accessories**



Metrolinq Alignment Scope can be mounted directly on any device and re-used during 60 GHz link installations multiple time. It significantly reduces alignment time allowing accurate antenna pointing to remote device.



Link Assist application is available for Android and iOS devices. It connects to metrolinq via external USB dongle (Bluetooth) and shows remote and local radio RSSI levels simplifying and speeding up the setup process.